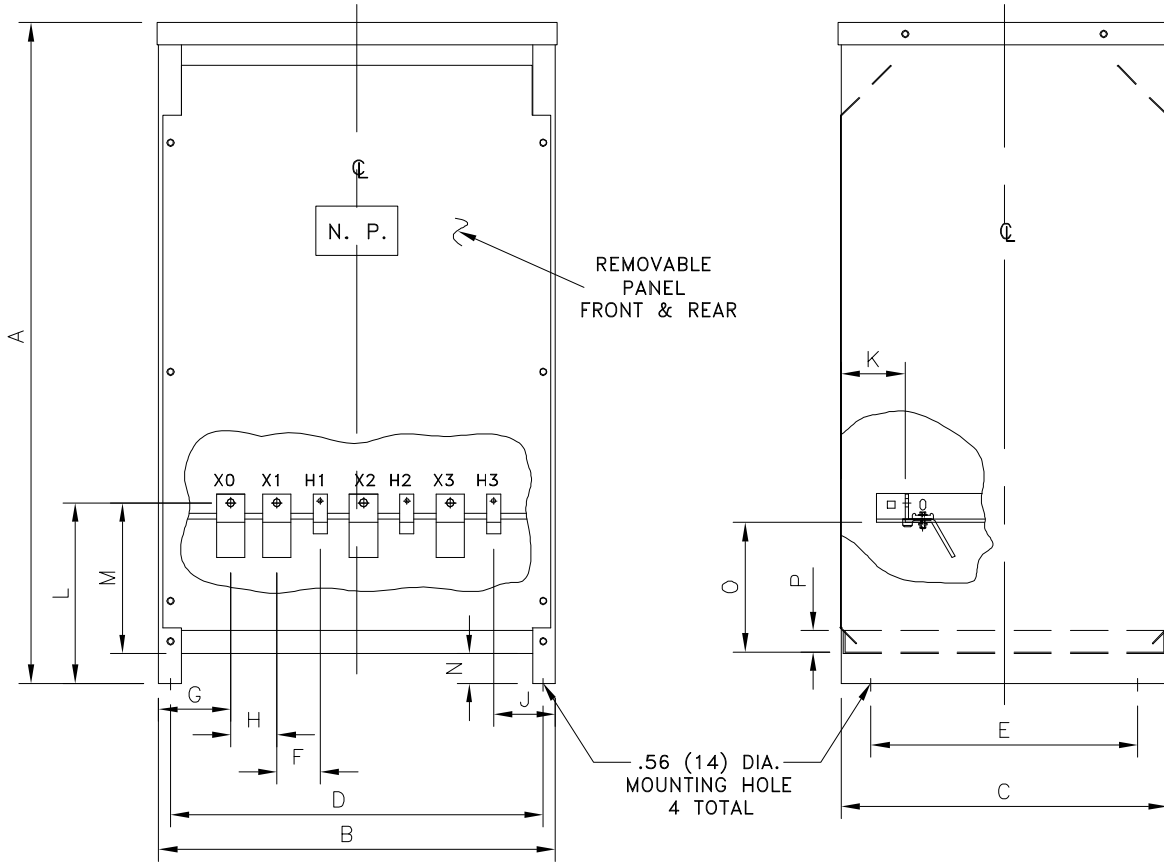


NOTES:

1. ALL UNITS ARE DESIGNED IN ACCORDANCE WITH APPLICABLE NEMA, UL, ANSI, AND IEEE STANDARDS.
2. DRY-TYPE VENTILATED, CLASS AA, NEMA TYPE 2 ENCLOSURE.
3. FOR NEMA 3R OUTDOOR APPLICATION, USE WEATHERSHIELD # WS-19.
4. TRANSFORMERS ARE FLOOR MOUNTED.
5. 220°C CLASS INSULATION SYSTEM.
6. PAINT COLOR IS ANSI #61.
7. ALUMINUM UNITS HAVE ALUMINUM WINDINGS AND TERMINATIONS. COPPER UNITS HAVE COPPER WINDINGS AND TERMINATIONS.



DIMENSIONS IN INCHES (MM)

FRAME	APPROX NET WT. LBS(KG)		A	B	C	D	E	F
	ALUMINUM	COPPER						
FR916A	785(357)	870(391)	46.58(1183)	27.97(710)	23.00(584)	26.29(667)	18.82(478)	3.06(78)
			G	H	J	K	L	M
			5.09(129)	3.25(83)	4.34(110)	4.50(114)	12.72(323)	10.51(267)
						N	O	P
						2.12(54)	9.13(232)	1.50(38)

THIS DIMENSION DRAWING IS FOR REFERENCE ONLY. IT IS NOT TO BE REGARDED AS INDICATING THE EXACT DETAILS OF CONSTRUCTION.

Rev4 - SEP/04

THE INFORMATION ON THIS DOCUMENT IS CREATED BY CUTLER-HAMMER. IT IS DISCLOSED IN CONFIDENCE AND IS ONLY TO BE USED FOR THE PURPOSE IN WHICH IT IS SUPPLIED.		DFTR	DATE	<h2 style="margin: 0;">Cutler-Hammer</h2> Juarez, Mexico		
		HEG	12/01/01			
		APPD	DATE	TITLE		
		EER	12/01/01	DRY TYPE TRANSFORMER OUTLINE		
		S.O.	TYPE	DRAWING TYPE		
		DRY TYPE TRANSFORMERS	/			
FEDERAL ID NO	PRODUCT CODE	REVISION	DWG SIZE	G.O.	DWG	SHEET
	TRANSFORMER	04	A		FR916A	01 OF 01