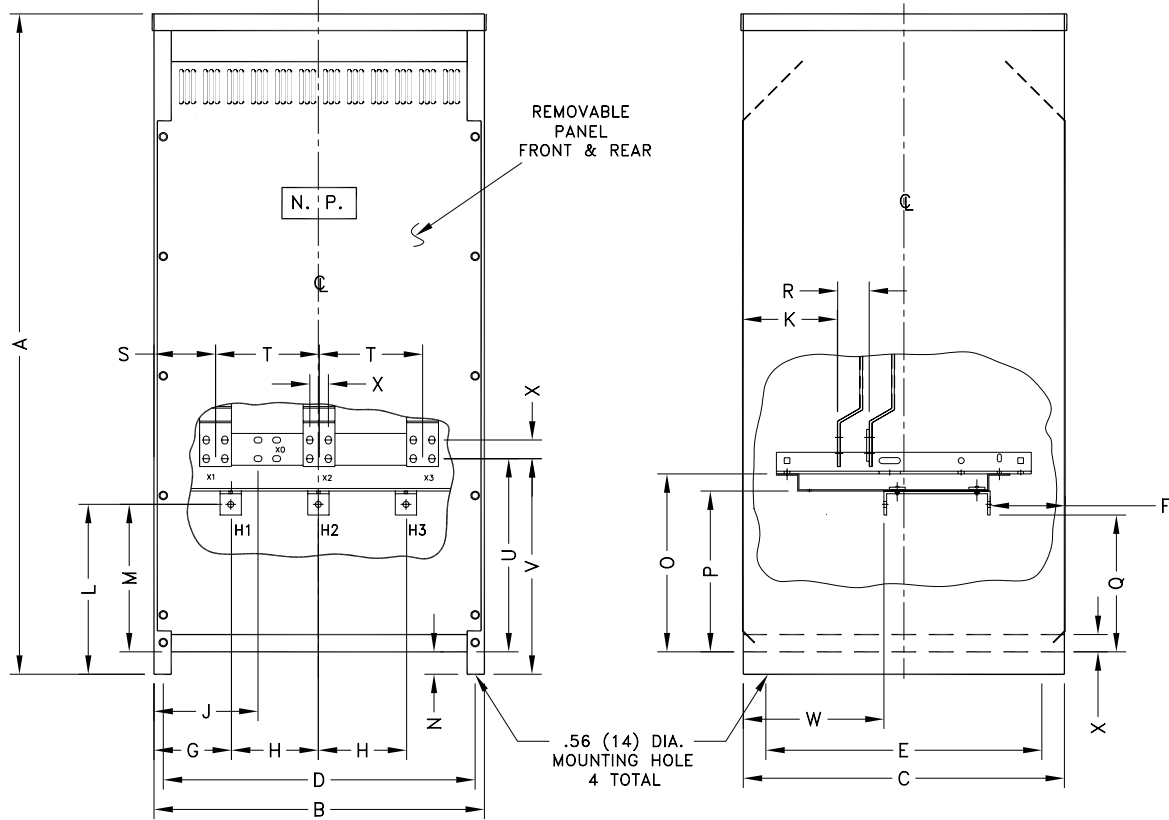


REF.
DWG. NO. 7073C02H02

NOTES:

1. ALL UNITS ARE DESIGNED IN ACCORDANCE WITH APPLICABLE NEMA, UL, ANSI, AND IEEE STANDARDS.
2. DRY-TYPE VENTILATED, CLASS AA, NEMA TYPE 2 ENCLOSURE.
3. FOR NEMA 3R OUTDOOR APPLICATION, USE WEATHERSHIELD # WS-34.
4. TRANSFORMERS ARE FLOOR MOUNTED.
5. 220°C CLASS INSULATION SYSTEM.
6. PAINT COLOR IS ANSI #61.
7. ALUMINUM UNITS HAVE ALUMINUM WINDINGS AND TERMINATIONS. COPPER UNITS HAVE COPPER WINDINGS AND TERMINATIONS.



DIMENSIONS IN INCHES (MM)

FRAME	APPROX NET WT. LBS(KG)		A	B	C	D	E	F
	ALUMINUM	COPPER						
FR918A	1444(656)	1894(861)	62.18(1579)	31.25(793)	30.25(768)	29.50(749)	26.00(660)	7.07(180)
			G	H	J	K	L	M
			7.37(187)	8.25(210)	9.79(249)	8.85(225)	16.00(406)	13.88(353)
			N	O	P	Q	R	S
			2.09(53)	16.75(425)	15.13(384)	12.63(321)	3.00(76)	5.79(147)
				T	U	V	W	X
				9.75(248)	18.19(462)	20.13(516)	13.32(338)	1.50(38)

THIS DIMENSION DRAWING IS FOR REFERENCE ONLY. IT IS NOT TO BE REGARDED AS INDICATING THE EXACT DETAILS OF CONSTRUCTION.

9/04

THE INFORMATION ON THIS DOCUMENT IS CREATED BY CUTLER-HAMMER. IT IS DISCLOSED IN CONFIDENCE AND IS ONLY TO BE USED FOR THE PURPOSE IN WHICH IT IS SUPPLIED.

DFTR DATE 12/01/01
HEG
APPD DATE 12/01/01
EER
S.O.

Cutler-Hammer Juarez, Mexico
TITLE DRY TYPE TRANSFORMER OUTLINE
TYPE TRANSFORMER