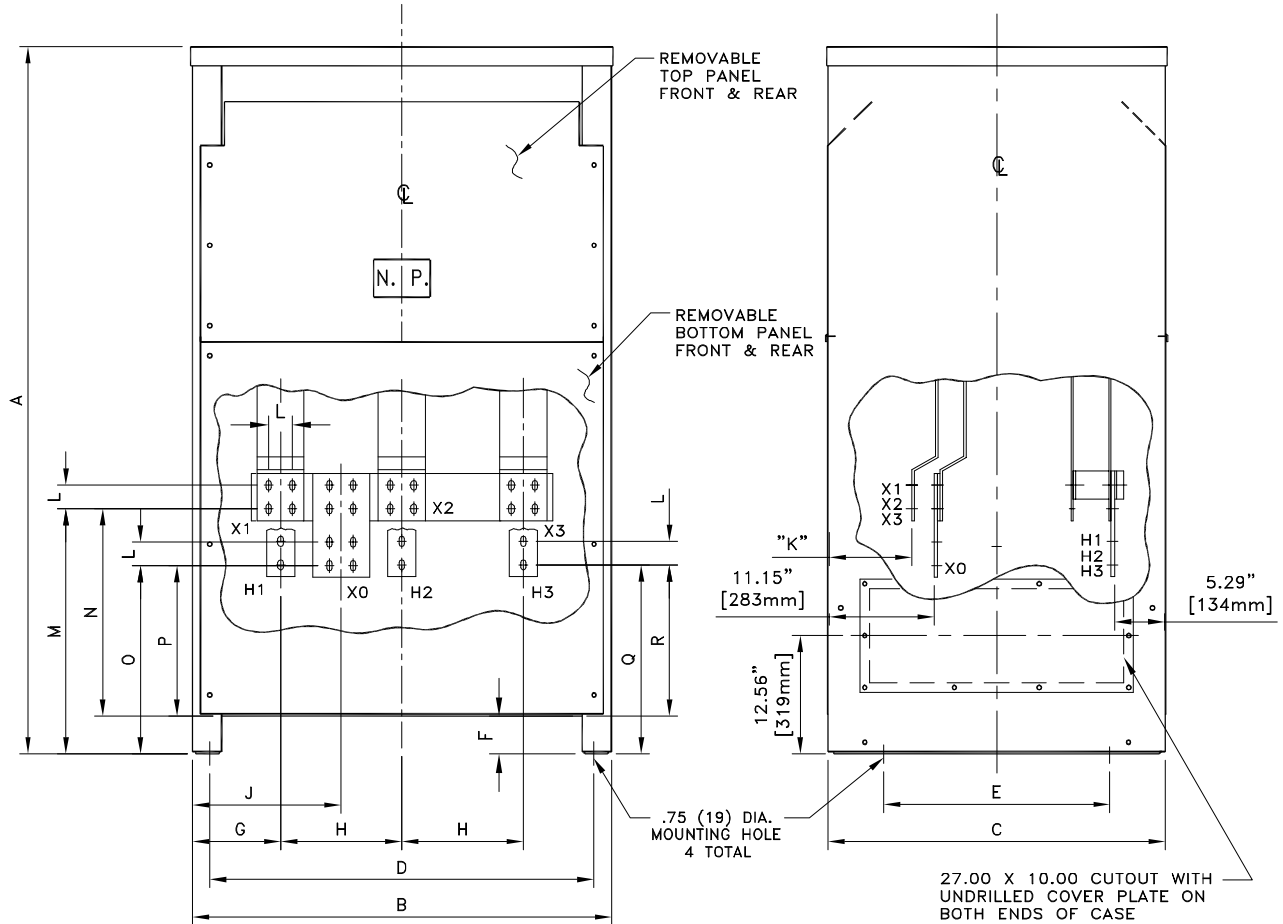


REF.  
DWG. NO. 7077C19H01

**NOTES:**

1. ALL UNITS ARE DESIGNED IN ACCORDANCE WITH APPLICABLE NEMA, UL, ANSI, AND IEEE STANDARDS.
2. DRY-TYPE VENTILATED, CLASS AA, NEMA TYPE 2 ENCLOSURE.
3. FOR NEMA 3R OUTDOOR APPLICATION, USE WEATHERSHIELD # WS-35.
4. TRANSFORMERS ARE FLOOR MOUNTED.
5. 220°C CLASS INSULATION SYSTEM.
6. PAINT COLOR IS ANSI #61.
7. ALUMINUM UNITS HAVE ALUMINUM WINDINGS AND TERMINATIONS. COPPER UNITS HAVE COPPER WINDINGS AND TERMINATIONS.



DIMENSIONS IN INCHES (mm)

FRAME	APPROX NET WT. LBS(KG)		A	B	C	D	E	F
	ALUMINUM	COPPER						
FR919	2400(1088)	3100(1409)	75.00(1905)	44.46(1129)	35.75(908)	40.75(1035)	24.00(610)	4.00(102)
			G	H	J	K	L	M
			10.86(276)	11.38(289)	16.54(420)	9.03(229)	2.50(64)	26.00(661)
			N	O	P	Q	R	
			22.00(559)	19.97(507)	15.96(405)	20.06(509)	16.04(407)	

THIS DIMENSION DRAWING IS FOR REFERENCE ONLY. IT IS NOT TO BE REGARDED AS INDICATING THE EXACT DETAILS OF CONSTRUCTION.

9/04

THE INFORMATION ON THIS DOCUMENT IS CREATED BY CUTLER-HAMMER. IT IS DISCLOSED IN CONFIDENCE AND IS ONLY TO BE USED FOR THE PURPOSE IN WHICH IT IS SUPPLIED.		DFTR	DATE	<b>Cutler-Hammer</b> Juarez, Mexico		
		HEG	12/01/01			
		APPD	DATE	TITLE	DRY TYPE TRANSFORMER	
		EER	12/01/01	OUTLINE		
S.O.		TYPE		TRANSFORMER		
FEDERAL ID NO	PRODUCT CODE	REVISION	DWG SIZE	G.O.	DWG	SHEET
	TRANSFORMER	03	A		FR919	01 OF 01