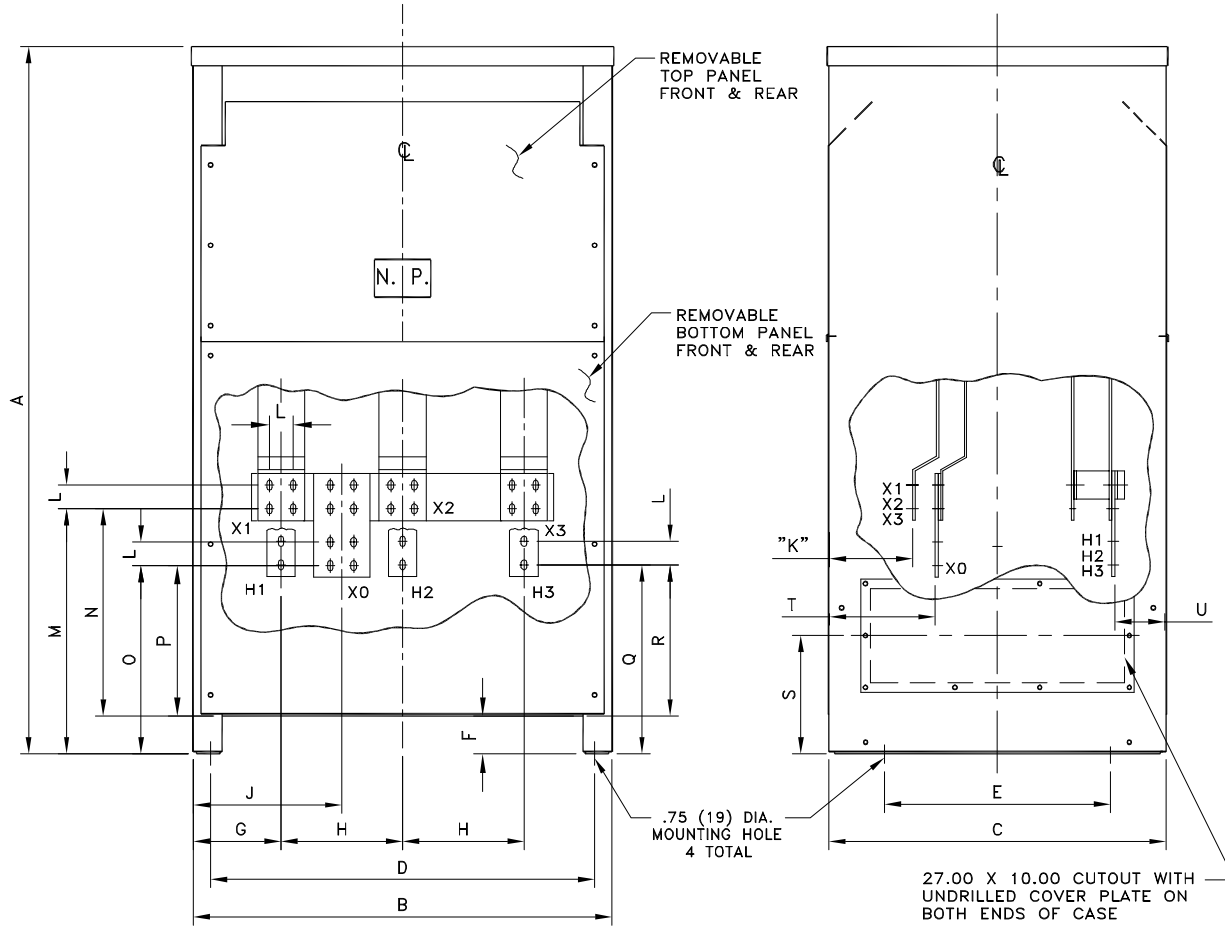


**NOTES:**

1. ALL UNITS ARE DESIGNED IN ACCORDANCE WITH APPLICABLE NEMA, UL, ANSI, AND IEEE STANDARDS.
2. DRY-TYPE VENTILATED, CLASS AA, NEMA TYPE 2 ENCLOSURE.
3. FOR NEMA 3R OUTDOOR APPLICATION, USE WEATHERSHIELD # WS-35.
4. TRANSFORMERS ARE FLOOR MOUNTED.
5. 220°C CLASS INSULATION SYSTEM.
6. PAINT COLOR IS ANSI #61.
7. ALUMINUM UNITS HAVE ALUMINUM WINDINGS AND TERMINATIONS. COPPER UNITS HAVE COPPER WINDINGS AND TERMINATIONS.



DIMENSIONS IN INCHES (mm)

FRAME	APPROX NET WT. LBS(KG)		A	B	C	D	E	F
	ALUMINUM	COPPER						
FR920	2900(1315)	3600(1636)	75.00(1905)	44.46(1129)	35.75(908)	40.75(1035)	24.00(610)	4.00(102)
			G	H	J	K	L	M
			9.36(238)	12.88(327)	15.79(401)	8.80(224)	2.50(64)	26.00(661)
			N	O	P	Q	R	S
			22.00(559)	19.97(507)	15.96(405)	20.06(509)	16.04(407)	12.56(319)
							T	U
							11.15(283)	5.29(134)

THIS DIMENSION DRAWING IS FOR REFERENCE ONLY. IT IS NOT TO BE REGARDED AS INDICATING THE EXACT DETAILS OF CONSTRUCTION.

9/04

THE INFORMATION ON THIS DOCUMENT IS CREATED BY CUTLER-HAMMER. IT IS DISCLOSED IN CONFIDENCE AND IS ONLY TO BE USED FOR THE PURPOSE IN WHICH IT IS SUPPLIED.		DFTR	DATE	<h2 style="margin: 0;">Cutler-Hammer</h2> Juarez, Mexico	
		HEG	12/01/01		
		APPD	DATE	TITLE	
EER	12/01/01	DRY TYPE TRANSFORMER			
S.O.		OUTLINE			
TYPE		TRANSFORMER			
FEDERAL ID NO	PRODUCT CODE	REVISION	DWG SIZE	G.O.	DWG
	TRANSFORMER	03	A		FR920
					SHEET
					01 OF 01