

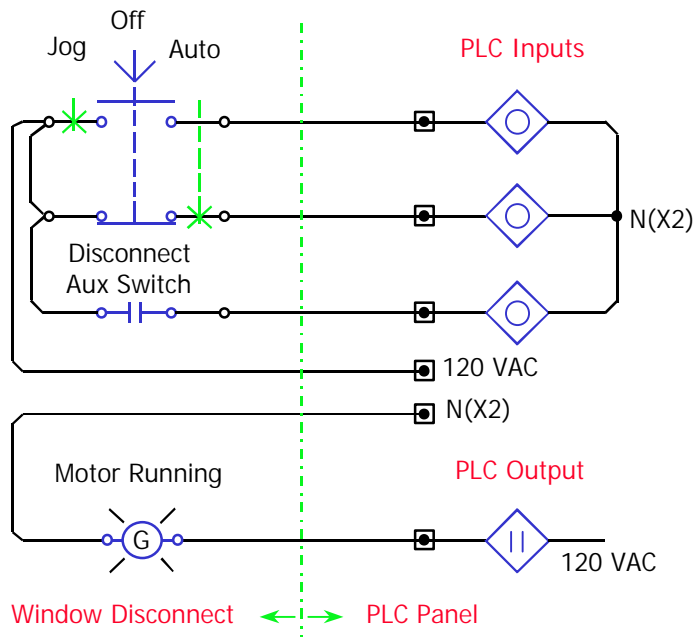
## FOREST PRODUCTS INDUSTRY USES CUTLER-HAMMER WINDOW DISCONNECTS TO IMPROVE PRODUCTIVITY AND ASSURE SAFE WORK PROCEDURES



During the design of a Greenfield Gypsum Wallboard facility, the design team included local disconnects for motors to increase uptime and improve personal safety. In operating the new plant, occasionally a need arises for operators to clear material from equipment. A specially configured UL Listed Window Disconnect allows facility operations to safely de-energize these motor loads at the equipment. Safe visual verification and *run-lockout-attempt to run* safety procedures can be implemented by operators, reducing the downtime often associated with availability of an electrician to lock-out equipment at the MCC. The disconnect-mounted auxiliary switch is used to log information to a database for auditing of the lockout procedure and to provide annunciation of disconnect switch position at the control station.

The Eaton Electrical **Safety Switch Flex Center** in Cleveland TN offers most every conceivable switch rating, enclosure and configuration to meet your needs for local disconnects. Contact your local Eaton Electrical sales office for pricing on this product.

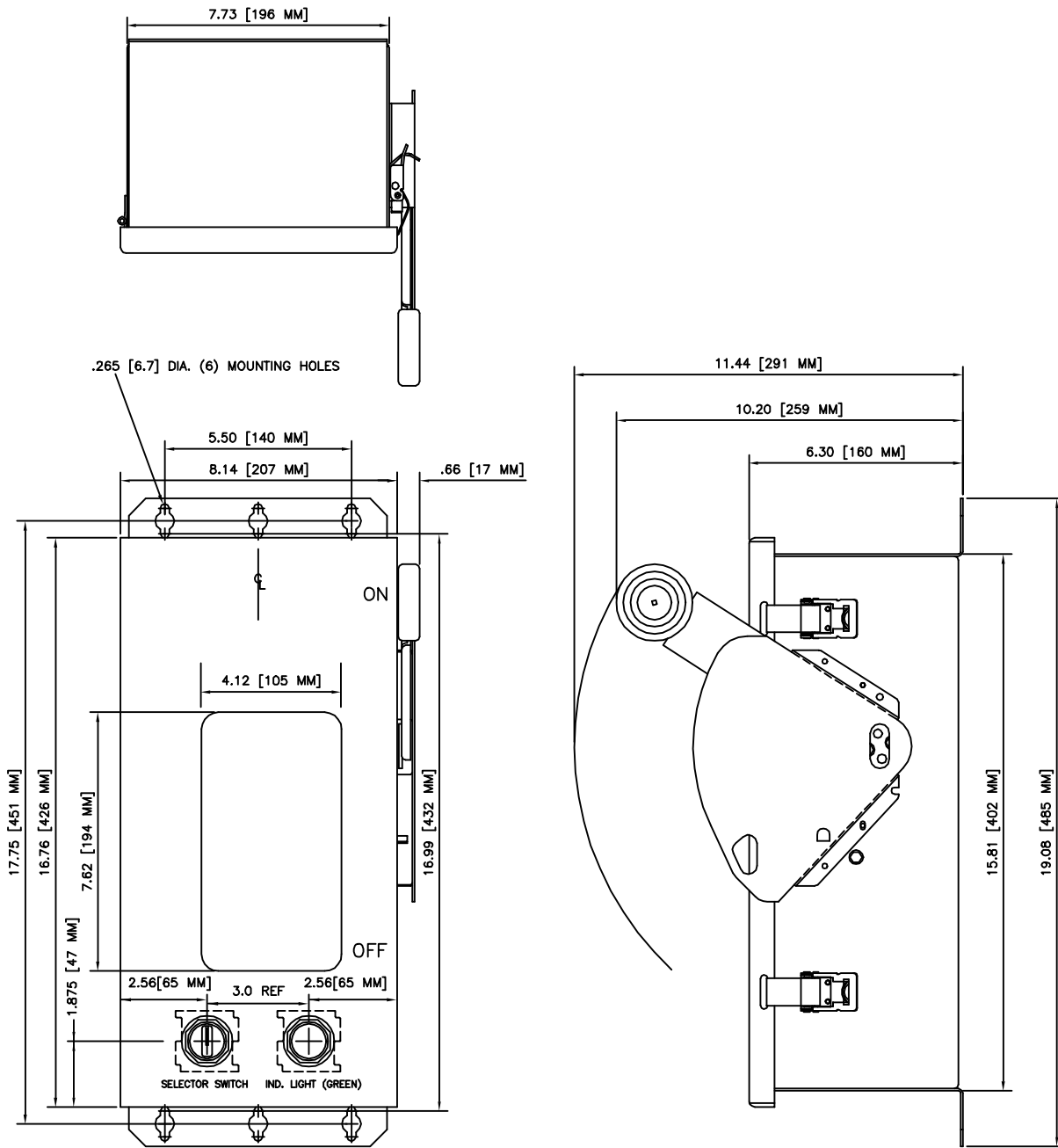
Cutler-Hammer UL Listed Window Disconnect switch with Jog-Off-Auto selector switch and PLC Run Indicating Light



### SAFE LOCK & TAG PROCEDURE

1. Operator identifies local disconnect of the load requiring service.
2. Switches door-mounted Jog-Off-Auto selector from Auto to Off. Then checks to assure load runs in local Jog mode. Indicating light mimics motor starter run command from the PLC or control panel.
3. Operator switches selector to Off. Opens disconnect, visually inspects all three phase blades opening.
4. Operator verifies load is de-energized by switching again to Jog position. Then returns switch to Off.
5. Lock & Tags local disconnect in accordance with OSHA standards.
6. Clears material from, or services mechanical equipment.
7. Removes Lock & Tag, closes local disconnect switch. Visually inspects all three phase blades closing.
8. Tests to assure load runs via the Jog selector switch.
9. Returns selector switch to Off, verifies PLC motor run output is de-energized from local Red light.
10. Returns selector to Auto mode and resumes normal operation.

# LOCKOUT/TAGOUT WINDOW DISCONNECT



## SPECIFICATIONS

30 Ampere Lockout/Tagout Window Disconnect: Cutler-Hammer P/N DH361UDKW2ILSL  
 60 Ampere Lockout/Tagout Window Disconnect: Cutler-Hammer P/N DH362UDKW2ILSL  
 100 Ampere Lockout/Tagout Window Disconnect: Cutler-Hammer P/N DH363UDKW2ILSL  
 200 Ampere Lockout/Tagout Window Disconnect: Cutler-Hammer P/N DH364UDKW2ILSL  
 Withstand Rating 30-200A, 10KA. Default door-mounted control assemblies: 10250T21KB, 10250TM51, 10250T181N, 10250TC2N & 10250TM81

THE INFORMATION ON THIS DOCUMENT WAS CREATED BY CUTLER-HAMMER. IT WAS DISCLOSED IN CONFIDENCE AND IS ONLY TO BE USED FOR THE PURPOSE IN WHICH IT WAS SUPPLIED.	DFTR	DUROCHER	DATE	02/10/04	<b>EAT•N   Cutler-Hammer</b>	
	APPD		DATE		TITLE	
	S.O.				TYPE	WIRING
	FEDERAL ID NO.	PRODUCT CODE	REVISION		G.O.	DWG
88725	SS	01			95-1647	01 OF 01